



Built to Withstand the Heat

**PROGRESSIVE REFRACTORY &  
MONOLITHICS PVT. LTD.**

Building a strong foundation with  
**ADVANCED REFRACTORY**  
**SOLUTIONS**



## WHO WE ARE

### Leading Manufacturer & Supplier of High-Quality Refractory Monolithics

*Established in 1990, the company was founded to leverage the vast experience of its entrepreneur in refractory manufacturing, supported by a team of skilled professionals.*

Our extensive product range includes **Dense Castables, Insulating Castables, LC Castable, Phosphate Bonded Castable/ Plastic Refractory, Acid-Proof Mortars & Precast Blocks** etc. designed to meet diverse industrial requirements. With advanced manufacturing units in **Jharkhand & Gujarat**, we ensure precision, consistency, & innovation in every product. Our state-of-the-art facilities, including independent Raw material plants & proximity to key ports, enable us to maintain a competitive edge. Accredited for our quality & reliability, we are trusted by leading organizations such as **NTPC, SAIL, IOCL, BHEL, NRL, L&T, DVC, MECON, EIL, ADANI, JINDAL** & many more.

**Our commitment to excellence, customer satisfaction, and technological expertise positions us as a preferred partner in the refractory industry.**

## OUR PHILOSOPHY

*Empowering Progress Through Quality and Sustainability*



### MISSION

To deliver innovative, high-quality refractory solutions that exceed customer expectations while maintaining a commitment to sustainability and technological excellence.



### VISION

To be a global leader in the refractory industry, recognized for our quality, innovation, and customer-centric approach.





## LEADERSHIP

Seasoned Experts in the Refractory Industry **Bringing Years of Expertise**

**Mr. Prem Chandra Jha, *Managing Director***

Mr. Prem Chandra Jha, a seasoned expert in the Refractory Industry, brings over **50 years of experience** in Refractory Monolithics **manufacturing and entrepreneurship**. With a B.Sc. in Chemistry, he possesses unmatched expertise in the design and development of Refractory products.

Under his visionary leadership, Progressive Refractory & Monolithics Pvt. Ltd. has grown into a trusted name in the industry, renowned for its **quality-driven approach** and innovative solutions. His **profound knowledge** and entrepreneurial acumen have laid the foundation for the company's **continued excellence** and expansion in the Refractory and Ceramic product manufacturing sector.



## STRATEGIC VISIONARY

**Mr. Pravin Kumar Jha, *Director***

Mr. Pravin Kumar Jha, an accomplished professional with over **22 years of experience**, plays a pivotal role in steering the **operations, marketing, and product development** at Progressive Refractory & Monolithics Pvt. Ltd.

A graduate in **Production Engineering (B.E.)**, he brings a blend of technical expertise and business strategy to ensure seamless operations and **superior product quality**. His dedication to maintaining client-centric services and fostering long-term relationships has significantly contributed to the company's growth and reputation in the Refractory and Ceramics Industry.

**With a keen focus on innovation and operational excellence, he continues to drive the company's success.**

# OUR PRODUCTS

## Diverse Range of Refractory Products to Meet Industry Requirements

Our products are designed to meet the specific requirements of industries operating in high-temperature and chemically demanding environments. Our product portfolio includes:



### CASTABLES

Dense Castables (up to 97% Alumina) Casting/ Gunning	Insulating Castables (Bulk Density 0.45–1.6 gm/cc)	Low Cement Castables (up to 94% Alumina) Vibration Casting/ Gunning
Self-Flow Castables	Phosphate Bonded Castables (Plastic Refractory)	Coil Coating Castables
Gel Bonded Castables	Trough Castables	Silicon Carbide Based LC Castables
Silicon Carbide Based Plastic Refractory	Special LC Castable For DRI Plants	Acid Resistant Castables



### MORTARS & COMPOUNDS

High Alumina Mortars	Fire Clay Mortars	Silica Mortars
Expansive Mortars	Air Setting Mortars	90k Mortars
70k Mortars		

### ACID PROOF MORTARS

Sodium Silicate Base	Potassium Silicate Base	Furan Resin Base
Phenolic Resin Base	Epoxy Resin Base	





# DURABLE REFRACTORIES

## Advanced Solutions for **Extreme Industrial Heat Applications**

We provide advanced refractory solutions, including specialized *Coke Oven Compounds, Durable Bricks and Tiles, innovative Ceramic Paints, and others for diverse industrial applications.*

### COKE OVEN COMPOUNDS

Lid Sealing Compounds	Patching Compounds	Gunning Compounds
Spraying Compounds		

### REFRACTORY FOR SMS & FOUNDRY AREA

Slag Pot Coating Material	Mould Coating Compounds	Spray Mass
Well Mix/NFC	Casting Powder	Synthetic Slag



### BRICKS, BLOCKS, & TILES

Refractory Bricks & Blocks	High Alumina Bricks, Blocks, & Tiles upto 80% Alumina	Fire Clay IS:6 & IS:8 Bricks, Blocks, and Tiles
Fire Clay IS:6 & IS:8 Bricks, Blocks, & Tiles	Precast Prefired Blocks	



### MISCELLANEOUS PRODUCTS

Ceramic Paints	Bitumen Cakes
Magnesite Ramming & Gunning Masses	

# OUR SERVICES

## Precision, Durability, and Innovation in Refractory Solutions

*We offer a comprehensive range of Refractory Services designed to meet the diverse needs of industries operating in high-temperature environments.*

From the **manufacturing and supply of standard** & tailor-made monolithic refractory products to expert application, design, and engineering solutions, we ensure **reliability and efficiency** at every step. Our services also include specialized dry-out processes, advanced testing facilities, & on-site supervision by certified **API-936 Engineers** to guarantee precision and quality. With a commitment to innovation & excellence, we deliver end-to-end refractory solutions that maximize performance and durability.



### STANDARD MONOLITHICS MANUFACTURING & SUPPLY

We produce and deliver a wide range of high-quality standard Monolithic Refractory products for diverse industrial applications.



### TAILOR-MADE MONOLITHICS

Customized Refractory Solutions Designed to meet specific operational requirements and challenging Industrial environments.



### DESIGNING OF REFRACTORY

Comprehensive Design Services for Refractory Systems, Ensuring optimal performance and durability in high-temperature applications.



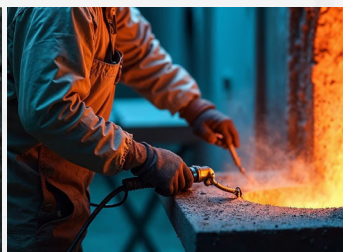
### APPLICATION OF REFRACTORY

Expert services for the precise Application of Refractory materials, enhancing operational efficiency and longevity.



### DRY-OUT OF REFRACTORY

Specialized Refractory Dry-out services to achieve desired strength and performance through controlled heating processes.



### ENGINEERING OF REFRACTORY

Advanced Engineering Solutions for Designing and Implementing Refractory Systems Tailored to Client Specifications.



### SUPERVISION BY API-936 ENGINEERS

Qualified API-936 Engineers provide supervision and technical expertise during Refractory Applications as per client requirements.



### REFRACTORY TESTING SERVICES

Comprehensive testing services to evaluate the Quality, Durability, and Performance of Refractory materials.



## PLANT & MACHINERY

### Our Plant Ensures **Efficient Production of Refractory Products**

*Equipped with advanced Machinery, our plant ensures efficient production of refractory products. We use Automated Intensive Mixers and Drum Mixers to achieve precision and high capacity.*

Our raw materials undergo careful crushing, screening, and demagnetization, ensuring uniformity in the final products. Additionally, vibrating tables are employed for accurate mold casting.



**24000 SQ. FT. OF COVERED SPACE**



**4000 SQ. FT. OF OPEN AREA**

### IN-HOUSE TESTING UNIT

Our in-house testing unit is equipped with cutting-edge instruments for comprehensive **chemical and physical analysis**. Key tests include chemical analysis of Alumina, Iron, Silica, Lime and Alkalies as well as thermal testing with PLC furnaces capable of reaching temperatures up to 1750°C.

We also have a facility to check thermal properties of material like Reversible **Thermal Expansion 1000°C, Pyrometric Cone** equivalent upto 38 Orton Cone and Thermal Conductivity Test. We also conduct strength evaluations, including **Compressive Strength** (using 4KN, 10KN, 30KN, 50KN, 100KN, 250KN and 500KN capacity machines), Cold Crushing Strength (CCS) and more. Other essential tests, such as **Bulk Density, Apparent Porosity, Abrasion Resistance, and Shrinkage Analysis**, are performed to assess the durability and performance of our products.



### OUR QUALITY CONTROL SYSTEM

To ensure high-quality standards, our **Quality Control System** focuses on selecting the best raw materials, conducting thorough inspections, and performing chemical and physical testing throughout the manufacturing process. Our process control measures encompass **Grinding, Mixing, Packing, and Stitching**, followed by a final inspection before dispatch. With these advanced capabilities, Progressive Refractory & Monolithics Pvt. Ltd. delivers reliable, **High-Performance Refractory Solutions** to meet diverse industrial needs.

# OUR MACHINERY

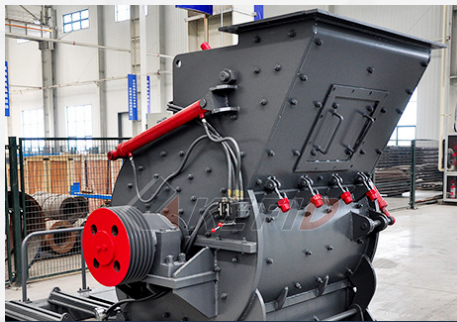
## Our Production Facility is Equipped with **Advanced Machines**

*At Progressive Refractory & Monolithics Pvt. Ltd., we utilize a state-of-the-art range of machinery to ensure the highest quality in our manufacturing process.*

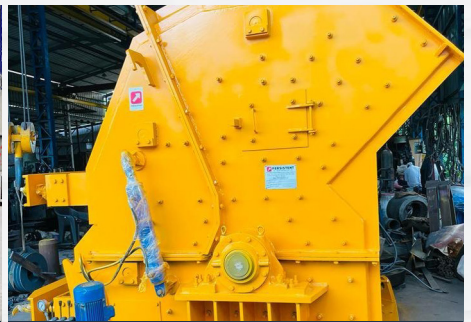
Our production facility is equipped with advanced machines designed for various stages of production, from **Grinding and Crushing to Mixing and Blending**. This machinery enhances our capacity, efficiency, and the consistency of our Refractory Products. These machines, combined with our **rigorous quality control processes**, enable us to deliver superior, reliable, and high-performance refractory products for diverse industrial applications.



ROLLER CRUSHERS



HAMMER MILLS



IMPACT MILLS



JAW CRUSHERS



BALL MILLS



DOUBLE DECKER VIBRATING SCREEN



PULVERISER



RIBBON BLENDER

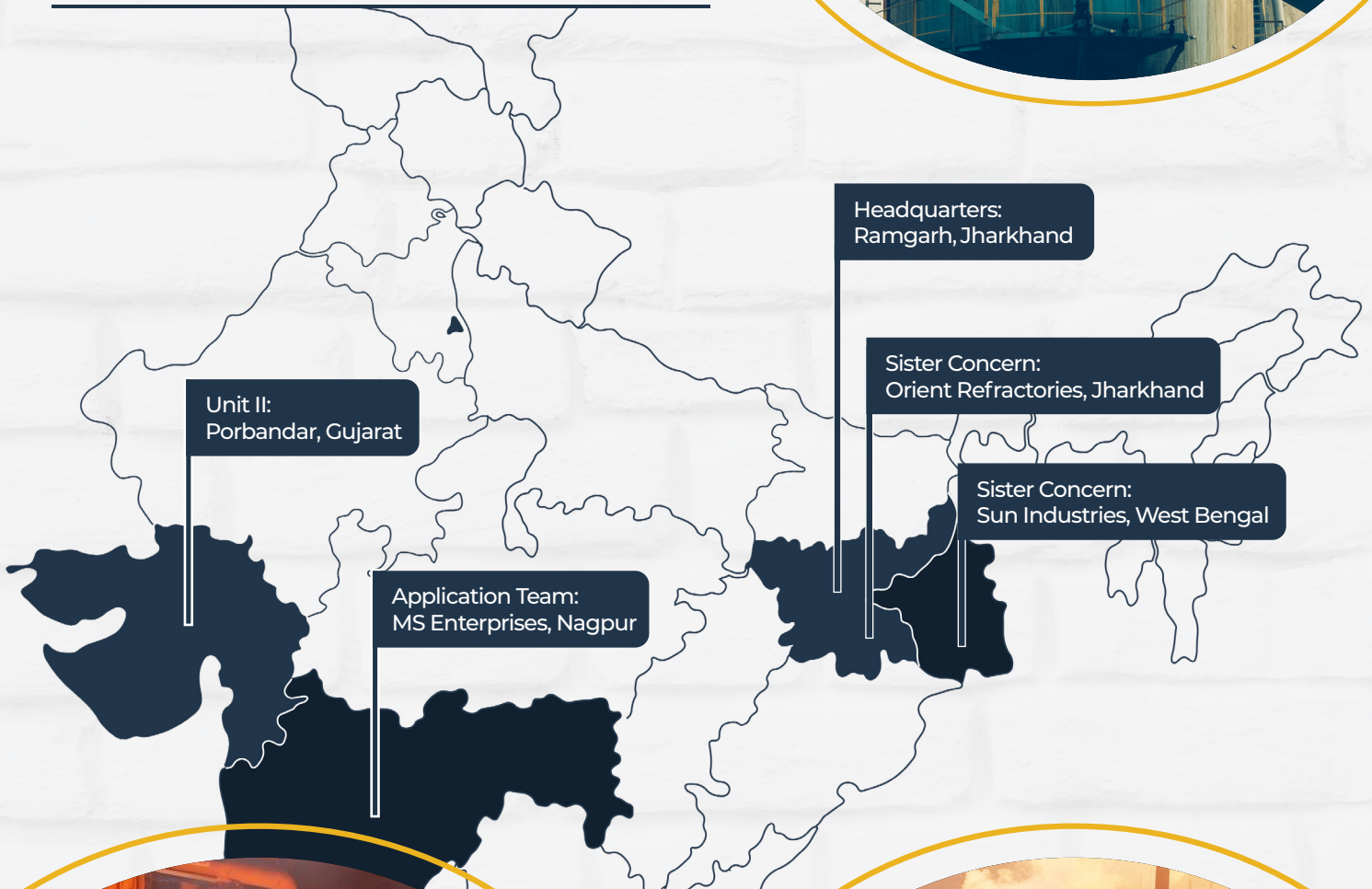


DRUM MIXTURES

## OUR PRESENCE

We have established a **strong presence across India**

*Our headquarters in Ramgarh, Jharkhand, serves as the central hub of our activities, while Unit II in Porbandar, Gujarat, strategically caters to the western region.*



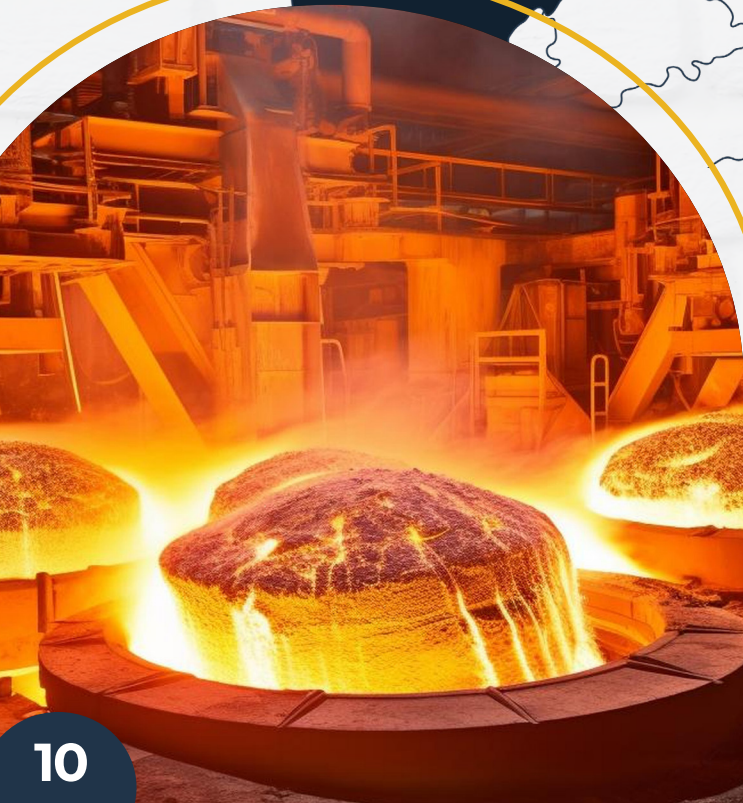
Unit II:  
Porbandar, Gujarat

Application Team:  
MS Enterprises, Nagpur

Headquarters:  
Ramgarh, Jharkhand

Sister Concern:  
Orient Refractories, Jharkhand

Sister Concern:  
Sun Industries, West Bengal



# OUR MAJOR CLIENTS

We proudly serve key industries including Steel Plants, DRI Plants, Petrochemicals, Refineries, Power Plants, Fertilizers & Allied Industries, offering customized products to meet the demanding requirements of these sectors.

Our solutions are designed to **enhance performance, durability, and efficiency** in critical applications such as **Coke Ovens, Reformers, Boilers, Ammonia Plants** etc. Backed by innovative **technology and decades of expertise**, we remain committed to exceeding client expectations and delivering excellence at every step.

			
	 A Navratna Company		
			
			
			
			



## PROGRESSIVE REFRACTORY & MONOLITHICS PVT. LTD.

### CORPORATE OFFICE

Plot No. 37 & 40, Industrial Area, Ramgarh Cantt, PO Marar, Distt. Ramgarh, Jharkhand - 829117

### MOBILE

+91-8789967062, +91-9304441113, +91-8789548014

### EMAIL

info@progressiverefractory.com | prmramgarh@gmail.com

[www.progressiverefractory.com](http://www.progressiverefractory.com)



**IRMA**  
PARTNERING HEATING SOLUTIONS  
INDIAN REFRACTORY MAKERS ASSOCIATION